

Japanese-style clothing for a changing lifestyle.

Samue Life

wasuian

2023
S/S
vol.15

"MADE IN JAPAN"



Wasuian.com



© All rights reserved *The color of the products may differ from the actual product due to printing.
*All products in this catalog are made in Japan.





Japanese-style clothing
to our changing lifestyles.

What you wear changes how you feel.

We want to enjoy the ordinary things in life.



The choice of "samue" in today's life.
Relaxation in harmony with the times.





We are committed to MADE IN JAPAN,
Each item is carefully handmade
by Japanese artisans.



THREE SEASONS
2023 SPRING / SUMMER COLLECTION



[Coordinate]
1040 Tate Slub Long Haori
1051 Tate Slub Samue
4102 Tenjiku Cotton Underwear
4400 Washi Seamless Tabi Socks



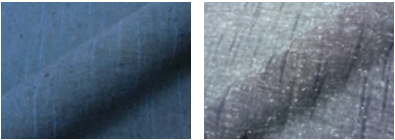
Wear freely and discover your own style with this long haori

A long haori woven with the popular "warp slub" fabric, which uses slub yarns with thick knotted threads for the warp, is now available, which can be matched with both western clothes and samue (Japanese work coat). Enjoy coordinating your own unique style by quickly putting it on for spring and fall outings.

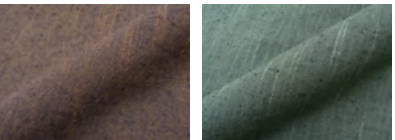
Long Haori **New Item** Spring/Fall Fabric Thin + + + Thick

Tate Slub Long Haori

Item# :1040 M-L ¥22,000 JPY
Size :M.L
Fabric :100% Cotton
Weight :400g (Size L)



No.2 Iron Blue No.4 Gray



No.5 Brown No.6 Green



Size(cm)	Length of jacket	Neck to Sleeve
M	100	73
L	110	78

The first partner of your samue life is this one

The secret of the rustic and unique texture is "slub fabric". The distinctive texture is created by using "slub yarn," a yarn intentionally spun so that it has thick and thin sections, giving the fabric a soft, worn-in feel.

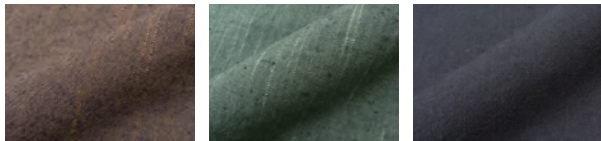
Size A Spring/Fall Fabric Thin \oplus $\oplus\oplus$ $\oplus\oplus\oplus$ Thick

Tate Slub Samue

Item#	:1051	S-LL	¥27,000 JPY
Size	:S.M.L.LL.3L.4L	3L	¥29,000 JPY
Fabric	:100% Cotton	4L	¥31,000 JPY
Weight	:610g (Size L)	※Only No.1 Navy for 4L	



No.1 Navy No.2 Iron Blue No.4 Gray



No.5 Brown No.6 Green No.7 Black



A great match for both Western and Japanese clothing

We want traditional Japanese clothes to be more familiar to you. This fabric is made of "slub yarn," which is intentionally spun so that it has thick and thin parts, and is characterized by its rustic texture and worn-in look.

Jacket Spring/Fall Fabric Thin \oplus $\oplus\oplus$ $\oplus\oplus\oplus$ Thick

Tate Slub Jacket

Item#	:1045	M-LL	¥17,000 JPY
Size	:M.L.LL		
Fabric	:100% Cotton		
Weight	:310g (Size L)		



Size(cm)	Length of Jacket	Neck to Sleeve
M	73	73
L	78	78
LL	83	83



No.1 Dark Navy No.2 Iron B No.4 Gray



No.5 Brown No.6 Green No.7 Black



Smooth T/C fabric with density and pleasant touch

Tetron cotton (T/C) fabric is wrinkle-resistant, stain-resistant, and easy to dry. Burberry-ori is dense yet smooth to the touch, with a rich sheen that gives it a luxurious look and feel. This relatively lightweight samue is ideal for wearing as work clothes from spring to fall.

Size C Spring/Fall Fabric Thin \oplus $\oplus\oplus$ $\oplus\oplus\oplus$ Thick

T/C Burberry-ori Samue

Item#	:5020	S-LL	¥26,000 JPY
Size	:S.M.L.LL.3L	3L	¥28,000 JPY
Fabric	:65% Polyester, 35% Cotton		
Weight	:560g (Size L)		



No.1 Dark Navy No.2 Black No.3 Brown



No.4 Green No.5 Gray



Kasuri-ori with beautiful colors and elegance creates a sense of dignity.

This is a standard samue of Wasuian, featuring rustic pongee fabric with a kasuri pattern. Its gentle and elegant texture is loved by many people. In Japan, we appreciate the four seasons, and people have adored the unique beauty in the colors found in nature since ancient times. Based on this Japanese tradition, we have prepared 17 colors. It's nice to change the colors to match each season.



No.1 Beige



No.2 Brown



No.3 Dark Brown



No.4 Golden Yellow



No.5 Yellow Ocher



No.6 Matcha Green



No.7 Light Green



No.8 Light Blue



No.9 Blue



No.10 Navy



No.11 Gray



No.12 Black



No.13 Pink



No.14 Wine Red



No.15 Dark Red



No.16 Orange



No.17 Royal Purple

Size B Spring/Fall Fabric Thin ⊕+---Thick

Kasuri Tsumugi Samue

Item# :6001 SS-LL ¥28,000 JPY

Size :SS.S.M.L.LL

Fabric :100% Cotton

Weight :760g (Size L)

Durable and high-quality twill weave with density yet soft

Twill weave is one of the three basic weave structures of textiles. It is seen in denim fabrics and is characterized by its excellent elasticity, comfort, and resistance to wrinkling. A total of 11 stylish and beautiful colors are available. It is easy to wear and recommended as a first samue for anyone of all ages.

Size B Spring/Fall Fabric Thin+⊕+Thick

Cotton Twill Weave Samue

Item# : 3055 S-LL ¥26,000 JPY
Size : S.M.L.LL
Fabric : 100% Cotton
Weight : 825g (Size L)



No.1 Navy



No.2 Gray



No.3 Brown



No.4 Bronze Yellow



No.5 Green



No.6 Black



No.7 White



No.9 Antique Purple



No.11 Pink



No.14 Blue



No.16 Dark Red



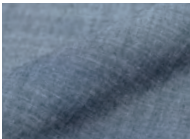
Versatile charm. Tasteful chambray.

This chambray fabric is produced by KAIHARA Corporation, a denim fabric manufacturer with the top market share in Japan. Chambray is a plain weave fabric with colored yarn in the warp and bleached yarn in the weft. This technique gives the fabric a beautiful marbled texture and depth. The color of the fabric changes depending on the way it reflects the sunlight, giving it a variety of different looks. Because the fabric is lightweight, you can wear it from spring to summer.

Size A Spring/Summer Fabric Thin → ⊕ ⊕ ⊕ ⊕ ⊕ Thick

Kaihara Denim Chambray Indigo Dye Samue

Item# :5085 M-LL ¥33,000 JPY
Size :M.L.LL
Fabric :100% Cotton
Weight :685g (Size L)



No.1 Navy



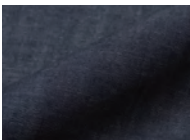
Beautiful denim samue made of pima cotton

The quality of cotton is determined by the length of the cotton fibers used as raw material, and the longer the fiber, the higher the quality. Pima cotton is classified as "extra-long staple cotton", meaning the highest quality cotton. It is characterized by its soft and supple texture and beautiful luster. It is also easy to wear and slightly thinner. It has a luxuriously smooth texture that makes you want to touch it again and again. Please feel the fabric and experience its exquisite texture.

Size A Spring/Fall Fabric Thin → ⊕ ⊕ ⊕ ⊕ ⊕ Thick

Kaihara Denim Pima Cotton Samue

Item# :5095 S-LL ¥34,000 JPY
Size :S.M.L.LL.3L 3L ¥37,000 JPY
Fabric :100% Cotton
Weight :885g (Size L)



No.1 Dark Navy



SAMUE COLUMN

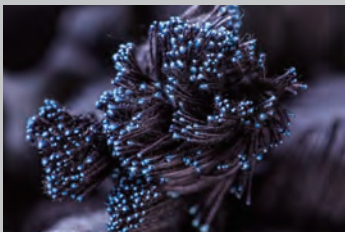
Kaihara Denim (Fukuyama City, Hiroshima Prefecture)



One of the world's leading denim fabric brands is located in Fukuyama City, Hiroshima Prefecture. The area has long flourished as a production center of Bingogasuri, and KAIHARA was also founded in 1893 as a weaving company producing hand-woven indigo-dyed kasuri. When weaving companies and clothing manufacturers asked Kaihara to produce denim fabric by applying technology developed through the production of kasuri (patterned fabrics), Kaihara made a major shift in its business from the production of kasuri to the production of denim fabric.

In 1973, the company received an order from Levi's and gained worldwide attention as a denim fabric manufacturer. The success of rope-dyeing opened the door to domestic denim fabric production, and KAIHARA continued to develop further, establishing Japan's first integrated production system that handles all processes of denim fabric production by completing weaving in 1978, fabric finishing in 1980, and spinning in 1991, thereby stabilizing the production of high-quality denim fabrics.

Today, the company holds approximately 50% of the domestic market share and exports to more than 30 countries. KAIHARA's strength lies in its ability to combine old and new technologies, such as utilizing old-fashioned shuttle looms while actively introducing state-of-the-art equipment, just as it has done in the past with the technology that came out of its earliest developments in the field of kasuri. KAIHARA, which carries on this spirit of tradition and innovation, is recognized as one of the top brands of high-quality denim in the world.





PURE SILK

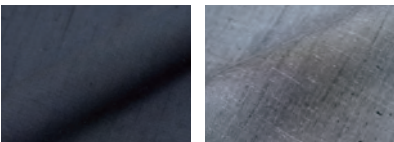
The finest elegance. A samue for special occasions.

You can fully enjoy the feel and luster of silk. Made in Japan of pure silk tsumugi fabric and carefully tailored by Japanese artisans, this one-of-a-kind samue has a sense of luxury which exudes an air of dignity befitting of a fine occasion. Please enjoy its comfort and the luxury of welcoming a special day in a special samue.

Size A Spring/Fall Fabric Thin ☒ Thick

Shoken (Pure Silk) Samue

Item# :8001 M-LL ¥71,000 JPY
 Size :M.L.LL
 Fabric :100% Silk
 Weight :495g (Size L)



No.1 Dark Navy No.2 Gray



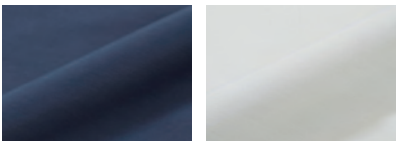
Samue with water repellency to prevent stains and dirt

The fabric is tailored with a water-repellent finish, so the fabric repels water and prevents stains and dirt. Features include an inside pocket on the upper front and a zippered pocket on the lower front, making it convenient and functional. This samue is ideal for doing calligraphy, pottery, yard work, and while working with or around water.

Size C Spring/Fall Fabric Thin ☒ Thick

Water-Repellent High-Performance Samue

Item# :5035 M-LL ¥33,000 JPY
 Size :M.L.LL
 Fabric :60% Cotton, 40% Nylon
 Weight:660g (Size L)



No.1 Dark Navy No.4 White



Water-Repellent



For Summer

2023 SPRING & SUMMER COLLECTION



WEB



[Coordinate]
2060 Cotton-Ramie Shijira Samue
4100 Cotton Yoryu Underwear
4400 Washi Seamless Tabi Socks
9080 Tsumugi-Design Setta



Traditional Shijira-ori with a pleasant touch

The Ramie fabric has a refreshing feeling. Shijira fabric is soft, lightweight, and cools you off, so it has been used as a traditional summer kimono since ancient times. There are creases called "shibo" wrapping vertically around on the surface of the fabric, so it remains comfortable by not sticking to your skin. This is a standard item for spring and summer.

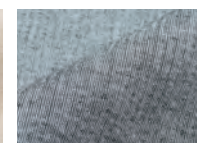
Size A Spring/Summer Fabric Thin ⊕ + + + Thick

Cotton-Ramie Shijira Samue

Item#	:2060	S-LL	¥26,000JPY
Size	:S.M.L.LL.3L	3L	¥28,000JPY
Fabric	:75% Cotton, 25% Ramie		
Weight	:425g (Size L)		



No.201 Beige



No.202 Gray



No.206 Green



No.207 Dark Navy



No.208 Brown



No.209 Black

Summer haori to match the ensemble

Even in the hot summer, this haori feels refreshing and classy. Because shijira-ori is airy, lightweight, and resilient, you can wear a haori over samue without losing the appearance or the cooling properties of the garment. You can enjoy matching it with samue even in summer.

Size X Summer Fabric Thin ⊕++++ !Thick

Cotton-Ramie Shijira Haori

Item# : 3060 M-LL ¥15,000JPY
Size : M.L.LL
Fabric : 75% Cotton, 25% Ramie
Weight : 155g (Size L)



No.2 Gray No.7 Dark Navy No.9 Black



Enjoy Your Own Coordination



[Coordinate]
3060 Cotton-Ramie Shijira Haori Gray
2060 Cotton-Ramie Shijira Samue Dark Navy
4100 Cotton Yoryu Underwear White
4400 Washi Seamless Tabi Socks Black
8060 Sashiko-hanao Geta Navy



[Coordinate]
3060 Cotton-Ramie Shijira Haori Dark Navy
2060 Cotton-Ramie Shijira Samue Dark Navy
4100 Cotton Yoryu Underwear White
4400 Washi Seamless Tabi Socks Black
8060 Sashiko-hanao Geta Navy



[Coordinate]
3060 Cotton-Ramie Shijira Haori Black
2060 Cotton-Ramie Shijira Samue Gray
4100 Cotton Yoryu Underwear White
4400 Washi Seamless Tabi Socks Black
9080 Tsumugi-Design Setta Gray

ROLL-UP



Roll-up Samue for both work and everyday use

Both the sleeves of the jacket and the hem of the pants can be rolled up with buttons. It looks cool and youthful when rolled up, and you can wear it as work clothing or relaxing wear, depending on the occasion. The fabric is a thin blend of 50% linen and 50% cotton, making this samue ideal for spring and summer when you want to stay cool.

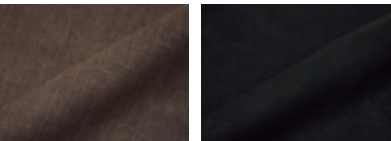
Size B Spring/Summer Fabric Thin ⊕++++ Thick

Linen-Cotton Roll-Up Samue

Item# : 8050 M-LL ¥31,000 JPY
Size : M.L.LL
Fabric : 50% Linen, 50% Cotton
Weight : 650g (Size L)



No.1 Beige No.2 Dark Navy



No.3 Brown No.4 Black



The finest ramie fabric with the traditional technique

The technique which has been passed down for over 400 years makes it possible to soften the stiff nature of ramie, and the fabric has an excellent feel that makes you want to touch it over and over. Its firmness prevents you from feeling sticky due to perspiration, yet it is soft and light. The cool ramie fibers enhance the texture, which has been called "Jofu," and has been compared to silk since ancient times.

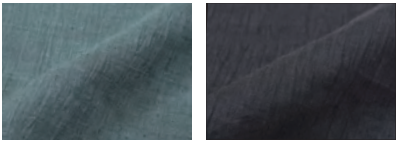
Size A Summer Fabric Thin ⊕++++⊖ Thick

Omi Chijimi Honasa (Pure Ramie) Samue

Item# :1095 M-LL ¥42,000 JPY
Size :M.L.LL.3L 3L ¥46,000 JPY
Fabric :100% Ramie
Weight :790g (Size L)



No.91 Dark Navy No.93 Gray No.94 Beige



No.95 Green No.99 Black



Enjoy your own coordination



[Coordination #1]
9050 Washi Shijira-ori Hat
1600 Omi Chijimi Hemp Long Haori
T-shirt and Jeans



[Coordinion #2]
1600 Omi Chijimi Hemp Long Haori
T-shirt
1095 Omi Chijimi Honasa (Pure
Ramie) Samue (Pants)



[Coordination #3]
1600 Omi Chijimi Hemp Long Haori
1095 Omi Chijimi Honasa (Pure Ramie)
Samue
4100 Cotton Yoryu Underwear
9080 Tsumugi-Design Setta

SAMUE COLUMN #2

Omi Chijimi (Goto area, Shiga Prefecture)



The Koto region of Shiga Prefecture has been known for its hemp fabrics since the Muromachi period (1333-1573). Especially in the Edo period (1603-1867), the area established itself as a production center of "Takamiyafu" (Omi Kamifu), a high-quality hemp fabric that is highly esteemed along with Echigo Chijimi and Nara-sarashi. The Hikone Clan protected the Takamiyafu and presented it to the Shogun's family. Today, while preserving the quality of traditional techniques, Omi Chijimi continues to introduce new bleaching, dyeing, and finishing techniques, as well as high-quality design and sensibility, and continues to produce high-quality hemp fabrics that are representative of their time.

Omi chijimi was produced extensively, partly due to the activities of Omi merchants, and in addition to yarn production in Omi, raw materials were also purchased from other regions such as Noto and Jyoshu (Ishikawa and Gunma Prefectures). According to a description in the Ishikawa Kashima County Journal, during the Genroku period (1688-1704), the Omi province purchased raw materials for Eshu chijimi in the form of skeins (hemp yarn). It is assumed that at that time, the chijimi cloth was made by a finishing process of washing striped or kasuri fabric. Omi chijimi has been improved since the Meiji period and has been transformed into a finishing method that expresses a unique uneven "shibo" shape by rubbing the woven fabric with the only finishing technique in Japan. The "shibo" improves ventilation by reducing the surface in contact between the garment and the skin, and gives a refreshingly cool feeling to the wearer. This fabric has a 400-year history of comfort in humid Japanese summers.



For Fall & WINTER

2023 Fall/WINTER COLLECTION



[Coordinate]
1054 Large Pattern Dobby Sashiko-ori Samue
2054 Large pattern Sashiko Haori
9002 Thick Pattern Sashiko-ori Zudabukuro
4300 Seamless Tabi Socks

WEB



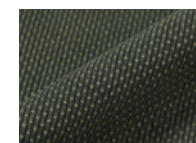
A dobby weave adds color to your daily life

This samue features a Sashiko-ori stitch pattern. The 100% cotton fabric made on a traditional "dobby loom" is soft and comfortable to wear. It has a supple texture, yet is durable, wrinkle-resistant and easy to care for. The two contrasting textures, as well as the traditional and modern Japanese styles, are appealing.

Size A Fall/Winter Fabric Thin +---+ Thick

Large Pattern Dobby Sashiko-ori Samue

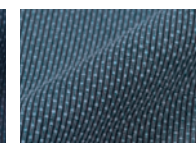
Item# : 1054 S-LL ¥34,000 JPY
Size : S.M.L.LL.3L.4L 3L ¥37,000 JPY
Fabric : 100% Cotton 4L ¥40,000 JPY
Weight : 875g (Size L) ※Only No.11 Navy for Size 4L



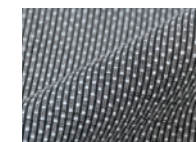
No.10 Green



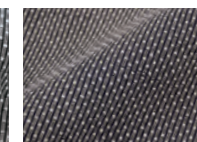
No.11 Navy



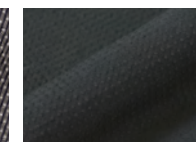
No.12 Blue



No.13 Gray



No.14 Brown



No.26 Black



Prestigious attire by putting on this haori

This haori is a must-have item to keep you warm during the cold fall and winter seasons. You can also wear it with a samue for a fashionable look. Enjoy Japanese style with this sleeveless haori.

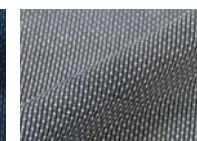
Chart X Fall/Winter Fabric Thin +---+ Thick

Large Pattern Sashiko Haori

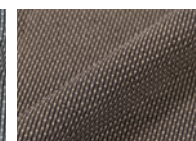
Item# : 2054 M-LL ¥18,000 JPY
Size : M.L.LL
Fabric : Face: 100% Cotton
Liner: 100% Polyester
Weight : 350g (Size L)



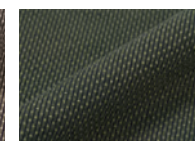
No.1 Dark Navy



No.3 Gray



No.4 Brown



No.10 Green



Feel the enchanting charm of dobby weave fabric

This samue has an impressive dobby pattern in regular rows. The 100% cotton fabric made on a traditional "dobby loom" is soft and comfortable to wear. Also, while supple in texture, it is durable, wrinkle-resistant and easy to care for. The sophisticated feeling balanced with rustic simplicity has a unique presence. This sashiko-ori samue is best enjoyed from fall to winter, but can also be comfortably worn until spring.

Size A

Fall/Winter

Fabric

Thin

Thick

Small Pattern Dobby Sashiko-ori Samue


Item#	:1055	S-LL	¥34,000 JPY
Size	:S.M.L.LL.3L.4L	3L	¥37,000 JPY
Fabric	:100% Cotton	4L	¥40,000 JPY
Weight	:855g (Size L)	※Only No.15 Navy for Size 4L	



No.15 Navy blue



Limited Stock
No.16 Blue



No.17 Gray



No.18 Brown



No.19 Dark brown



No.20 Black



Elegant and comfortable haori for daily life

This haori can be worn with samue for warmth and a more elegant appearance. The pattern is not overpowering, so you can wear it with any other samue.

Size X

Fall/Winter


Fabric

Thin

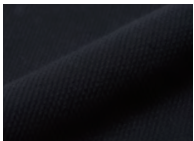
Thick

Small Pattern Dobby Sashiko Haori

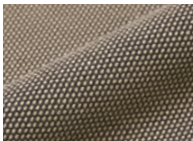
Item#	:2055	M-LL	¥18,000 JPY
Size	:M.L.LL		
Fabric	:Face 100% Cotton Liner 100% Polyester		
Weight	:350g (Size L)		



No.1 Dark Navy



No.2 Black



No.4 Brown



Enjoy a stylish jacket made of sashiko-ori fabric

This jacket is made of the same fabric as the popular Wasuian original "Small Pattern Dobby Sashiko-ori Samue." We make this jacket not only for samue but also to be compatible with western clothes. The moderately thick fabric is light and comfortable to wear in chilly seasons. The slight sheen created by the stitch pattern is appealing.

Jacket

Fall/Winter


Fabric

Thin

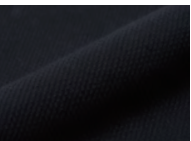
Thick

Sashiko-ori Jacket

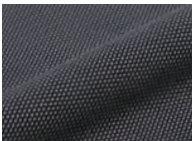
Item#	:1074	M-LL	¥19,000 JPY
Size	:M.L.LL		
Fabric	:100% Cotton		
Weight	:480g (Size L)		



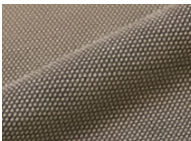
No.1 Dark Navy



No.2 Black



No.3 Gray



No.4 Brown





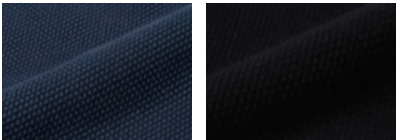
The stitching with a sense of dignity and martial chic

This is a very popular samue of masculine chic in our physical stores as well. The sturdy sashiko weave fabric has a texture reminiscent of judo wear, yet it is comfortable and supple. The careful sewing technique shows the skill of Japanese artisans. This samue gives you the greatest sense of security to stay warm from fall to winter. Please enjoy the unique charm of this majestic and powerful garment.

Size A Fall/Winter Fabric Thin +++++⊖ Thick

Thick Yarn Sashiko-ori Samue

Item#	: 2012	S-LL	¥40,000 JPY
Size	: S.M.L.LL.3L.4L	3L	¥44,000 JPY
Fabric	: 100% Cotton	4L	¥48,000 JPY
Weight	: 1230g (Size L)		



No.1 Navy No.2 Black



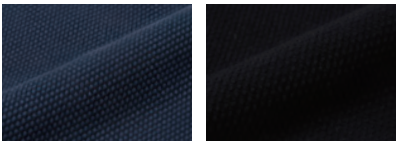
Haori with a sense of martial yet prestigious quality

This haori is made to match our "Thick Yarn Sashiko-ori Samue." Although the fabric looks like judo wear, this haori is actually soft and gives a sense of high prestige.

Size X Fall/Winter Fabric Thin +++++⊖ Thick

Thick Yarn Sashiko-ori Haori

Item#	: 3012	M-LL	¥21,000 JPY
Size	: M.L.LL		
Fabric	: Face 100% Cotton		
	Liner 100% Polyester		
Weight	: 520g (Size L)		



No.1 Dark Navy No.2 Black



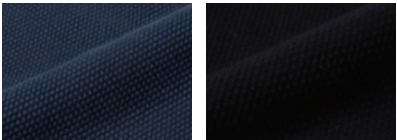
A Sashiko-ori jacket you want to wear every day

This jacket has a supple texture yet a rustic and heavy feel. The thick fabric is reminiscent of martial arts wear, but it is carefully woven to be soft and comfortable to wear. Just one piece of this jacket will keep you warm, and you can wear it over samue and Western clothes. Please enjoy wearing this rugged Japanese style clothing.

Jacket Fall/Winter Fabric Thin +++++⊖ Thick

Thick Yarn Sashiko-ori Jacket

Item#	: 3025	M-LL	¥26,000 JPY
Size	: M.L.LL		
Fabric	: 100% Cotton		
Weight	: 700g (Size L)		



No.1 Dark Navy No.2 Black



#Elastic sleeve and hems

- [HIJIRI] Series

Returning to the origin. For doing "Samu"

"Samu" refers to the daily chores at the temples, and "samue" is the garment worn when doing such work. The lineup of the "HIJIRI" series from Wasuian includes samue with elastic sleeves and hem, which has a wide and loose silhouette, including the width of the trousers, inside pockets, pockets with zippers, and miyatsuguchi (small openings on both sides on the sleeves), all of which provide various functions and activities.

[Coordinate]
5052 Burberry-ori Samue [HIJIRI]
4102 Tenjiku Cotton Underwear

Soft texture reminiscent of wool

Smooth and elastic, it feels just like wool.

The subtle sheen creates a rustic yet elegant feeling. The wrinkle-resistant, loose-fitting silhouette makes it ideal for everyday use or as relaxing wear.

Size P Fall/Winter Fabric Thin +++++⊕Thick

Wool-Like Stretch Samue [HIJIRI]

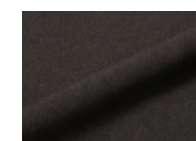
Item# : 1113 M-LL ¥36,000 JPY
Size : M.L.LL
Fabric : 100% Polyester
Weight : 1110g (Size L)



No.1 Dark Navy



No.2 Gray



No.3 Brown

【Top】 Upper front body inner pocket, Lower front body zipper pocket, sleeve rubber, Miyatsuguchi, back support, shoulder rest, slits on both sides
【Pants】 Waist full elastic, waist self-fabric string, with zipper, rubber hem, knee pad, hip pad, 1 left and right pocket, 1 right back pocket



1.Back and shoulder pads
Back and shoulder pads are provided for ease of wear and durability.



2.Inside pocket
An inside pocket is provided for easy access to a cell phone or other small items.



3.Pocket with zipper
The right pocket of the jacket has a zipper for ease of use.



4.Miyatsuguchi
The sleeves of both arms have openings for easy arm movement during work.



5.Full elastic waistband
The fully elastic waistband allows the waist to remain flexible even after many years.



6.Buttock and knee pads
The buttock and knee pads, which cover areas that are prone to chafing, are to ensure a good appearance.